



WirelessKable

DC Power Solution

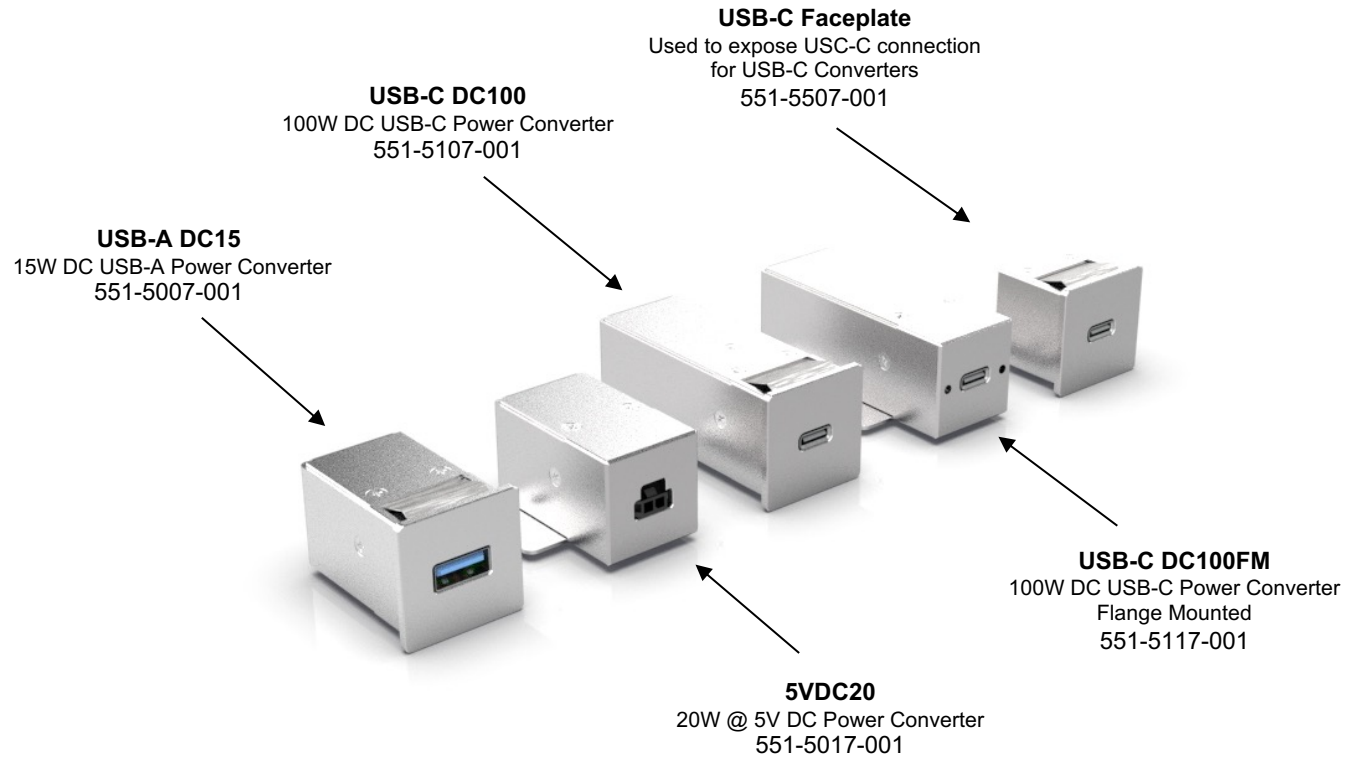
August 10, 2022



This document is a strictly confidential communication to and solely for the use of the recipient and may not be reproduced or circulated without WirelessKable Inc. prior written consent. If you are not the intended recipient, you may not disclose or use the information in this documentation in any way. The information is not intended as an offer or solicitation with respect to the purchase or sales of any security.

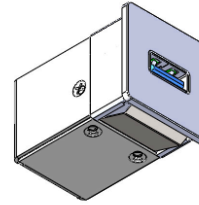
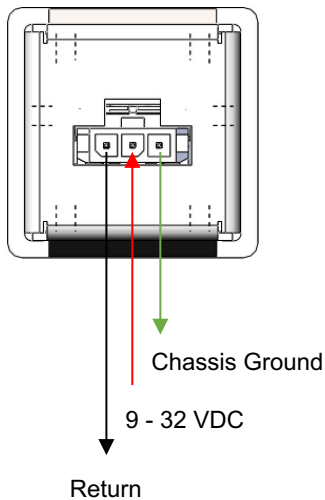
Ce document est une communication strictement confidentielle à et uniquement pour l'usage du destinataire et ne peut être reproduit ou diffusé sans le consentement écrit préalable de WirelessKable Inc. Si vous n'êtes pas le destinataire prévu, vous ne pouvez en aucun cas divulguer ou utiliser les informations contenues dans cette documentation. L'information n'est pas conçue comme une offre ou une sollicitation concernant l'achat ou la vente de tout titre.

WirelessKable - USB-C and USB-A DC Power Converters



WirelessKable - DC Power Solution

- All DC Convertors' size is optimized and the footprint is significantly small.
- In DC, for the USB-C devices, a significant input current may be necessary which impacts the wiring (*please see AC Solution*).
- Faceplates are palatable

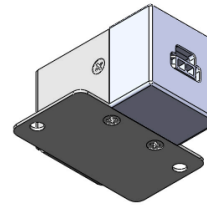


USB type A Devices

3A @ 5V

USB 3.0 & Apple MFi

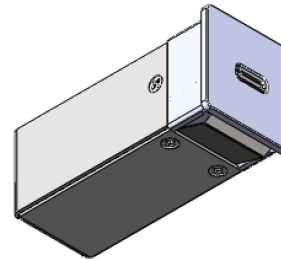
To power Phones, Tablets, Camera, Watches and other personal devices



5VDC20 Power Converter

4A @ 5V

To power WirelessKable A/V Converters or other devices

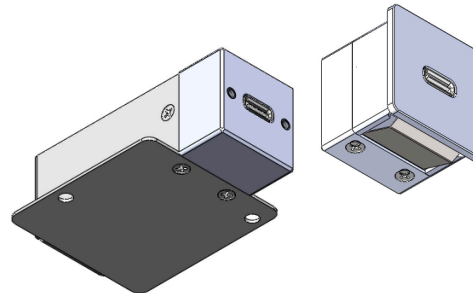


USB-C DC100

5A @ 5V, 9V, 12V, 15V, 20V

USB-C Power Distribution 3.0

To power Laptops, Phones, Tablets, Camera, Watches and other personal devices



USB-C DC100FM

5A @ 5V, 9V, 12V, 15V, 20V

USB-C Power Distribution 3.0

To power WirelessKable A/V Converters Laptops, Phones, Tablets, Camera, Watches and other personal devices

To be used with USB-C to HDMI converters, to provide power with HDMI connectivity

- Product Price
- Product Specifications
- 3D STEP model
- Installation Manual
- Qualification Test Report
- Product Sample
- Or for any other information

Please send us a request at: sales@wirelesskable.com

Or call us at: +1 (514) 400 7188